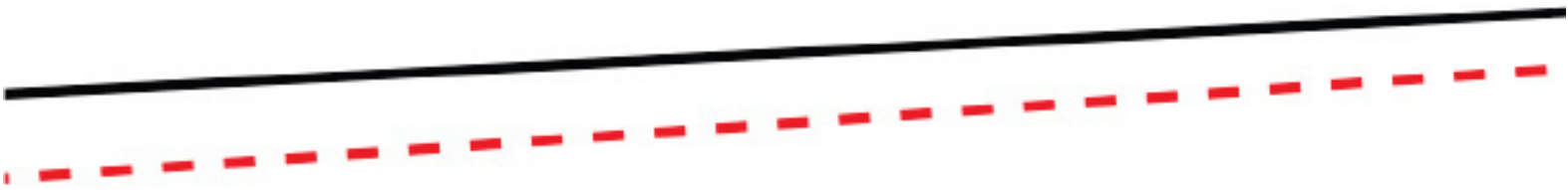
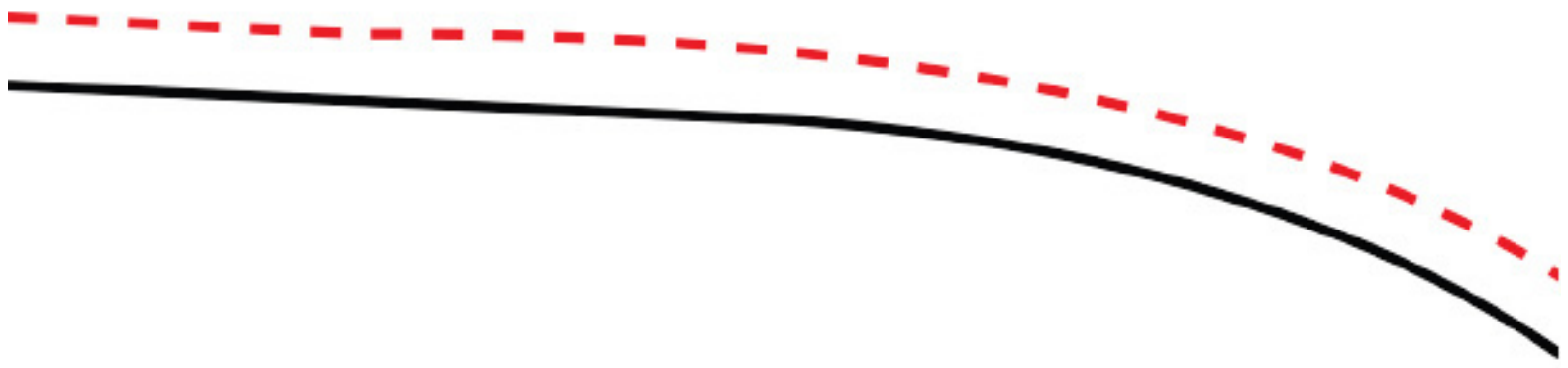
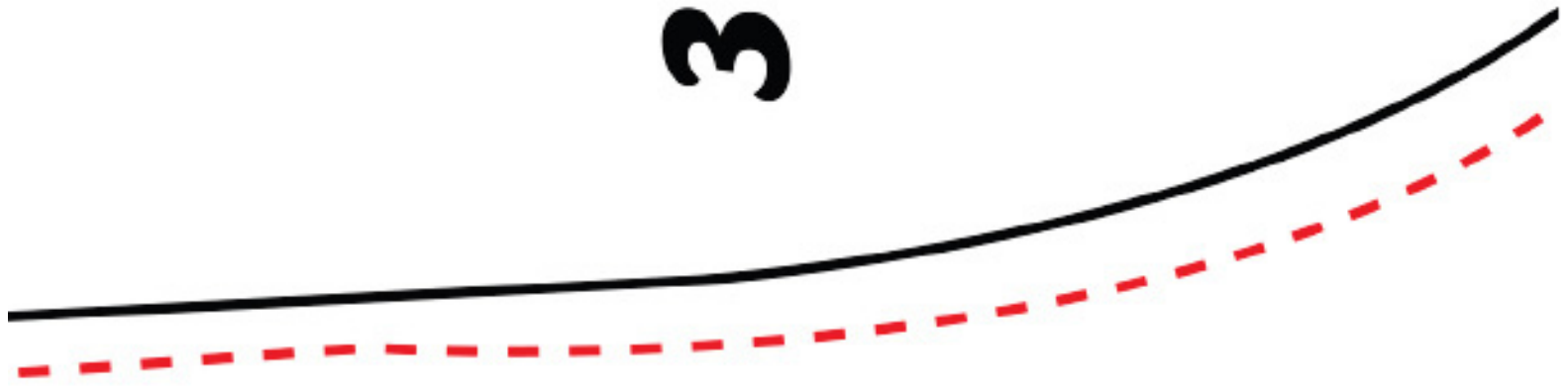


1

2



3



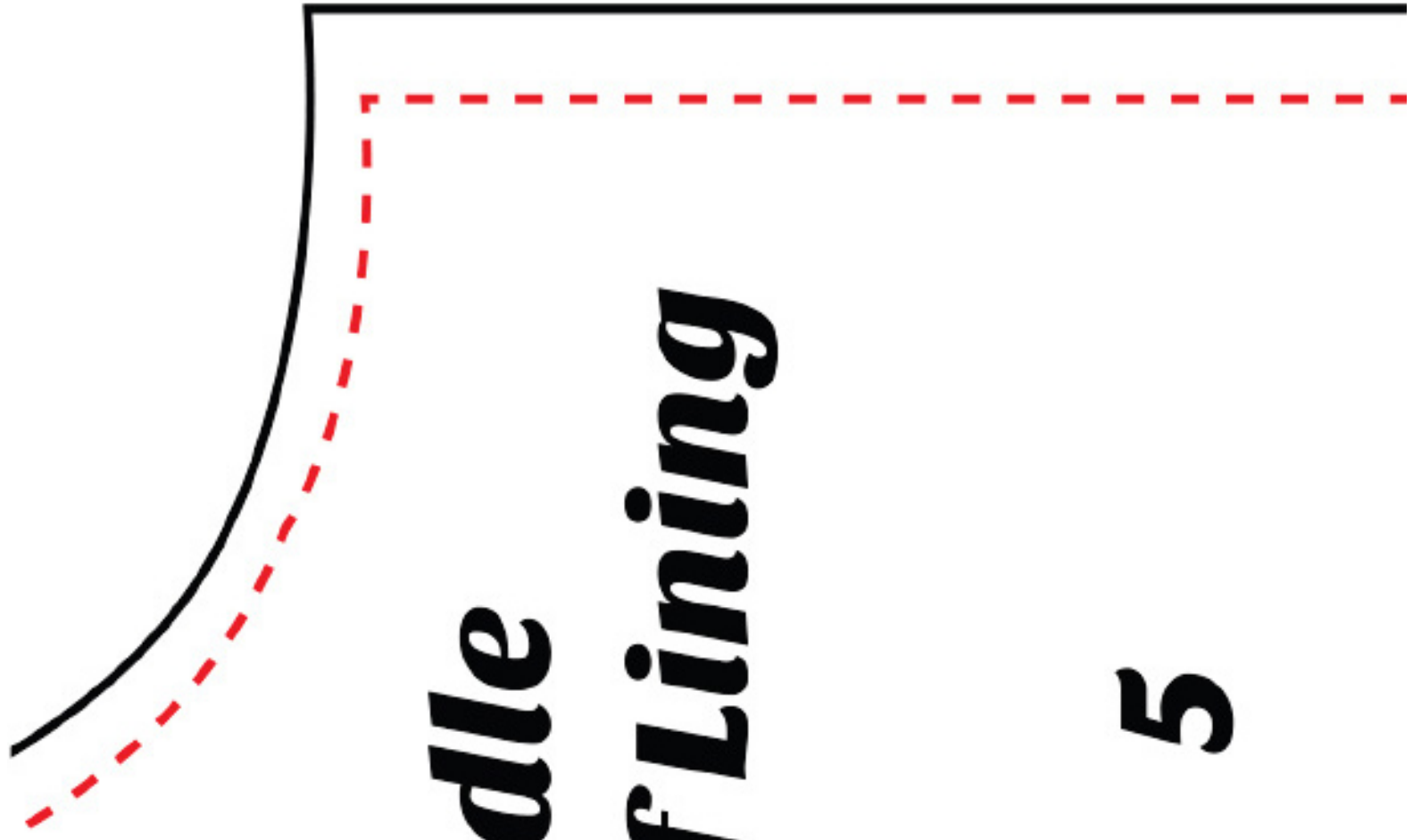


Bag Body and Cut 2 of Fabric and

Bag Seam

4





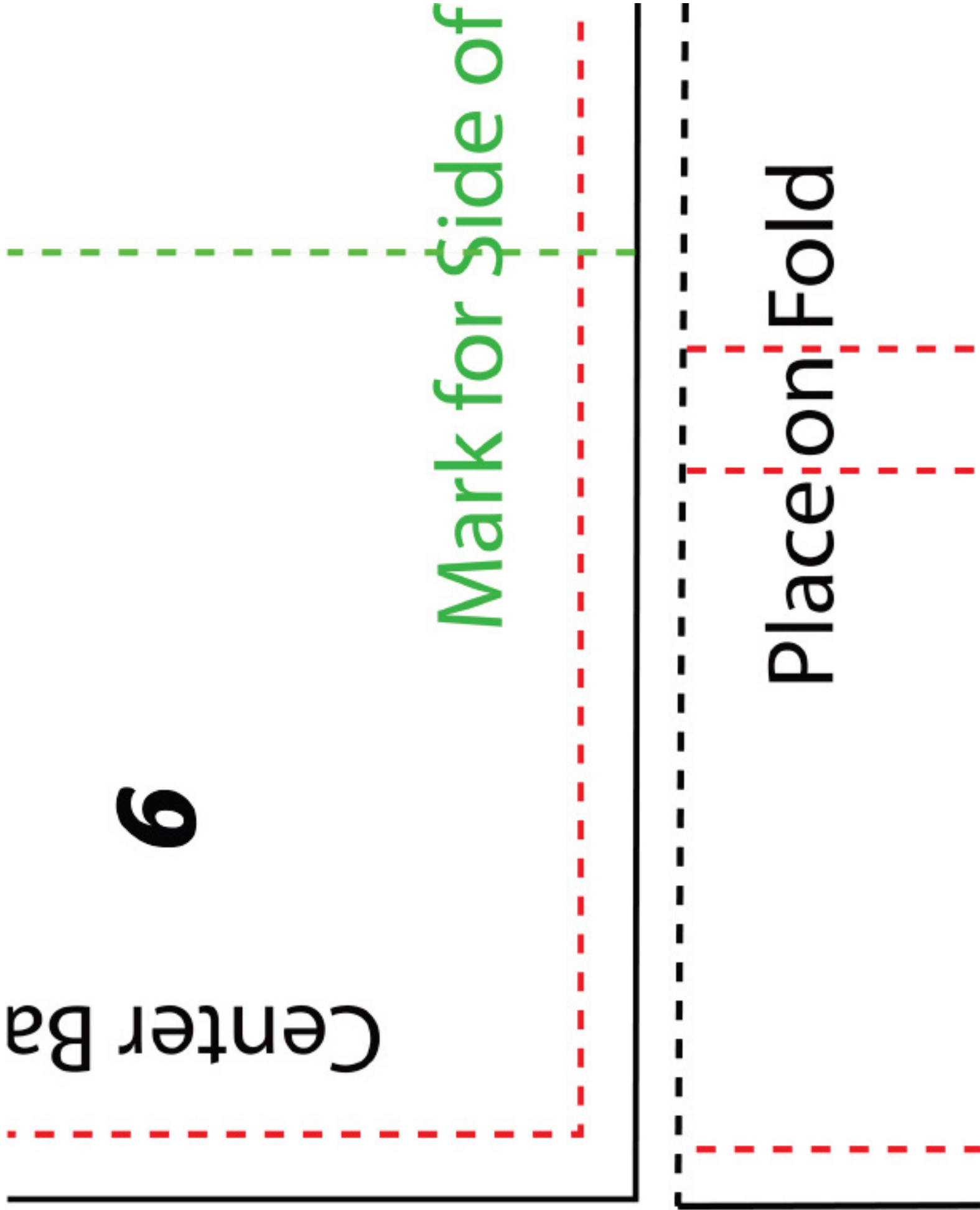
dy and Handle pic and 2 of Lining

Center Ba

6

Mark for Side of

Place on Fold

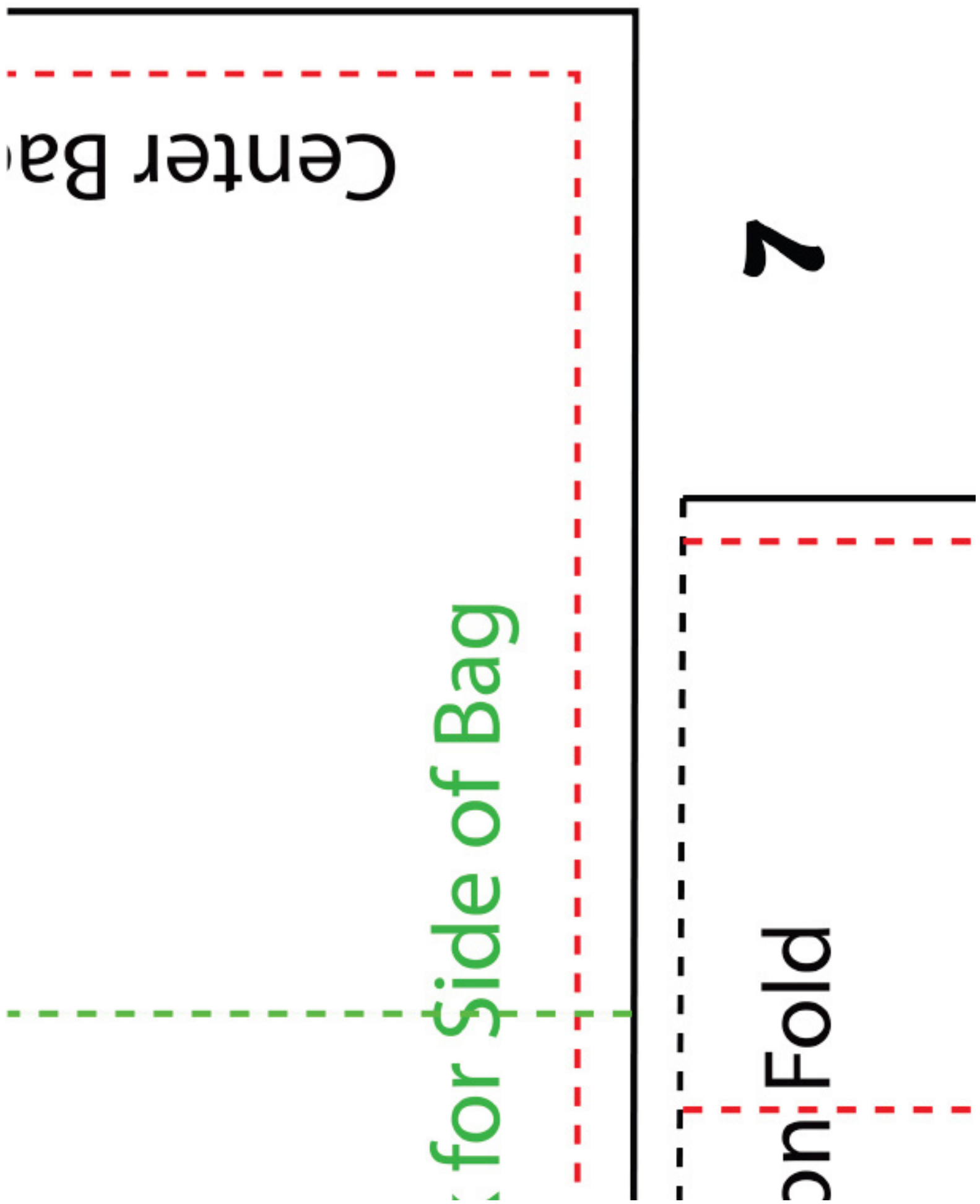


2

on Fold

for Side of Bag

Center Ba



A diagram showing a rectangular area defined by a solid black line on the right and bottom, and a dashed red line on the left and top. The text "Inside Pocket" is written vertically in the center. The number "8" is located to the right of the diagram.

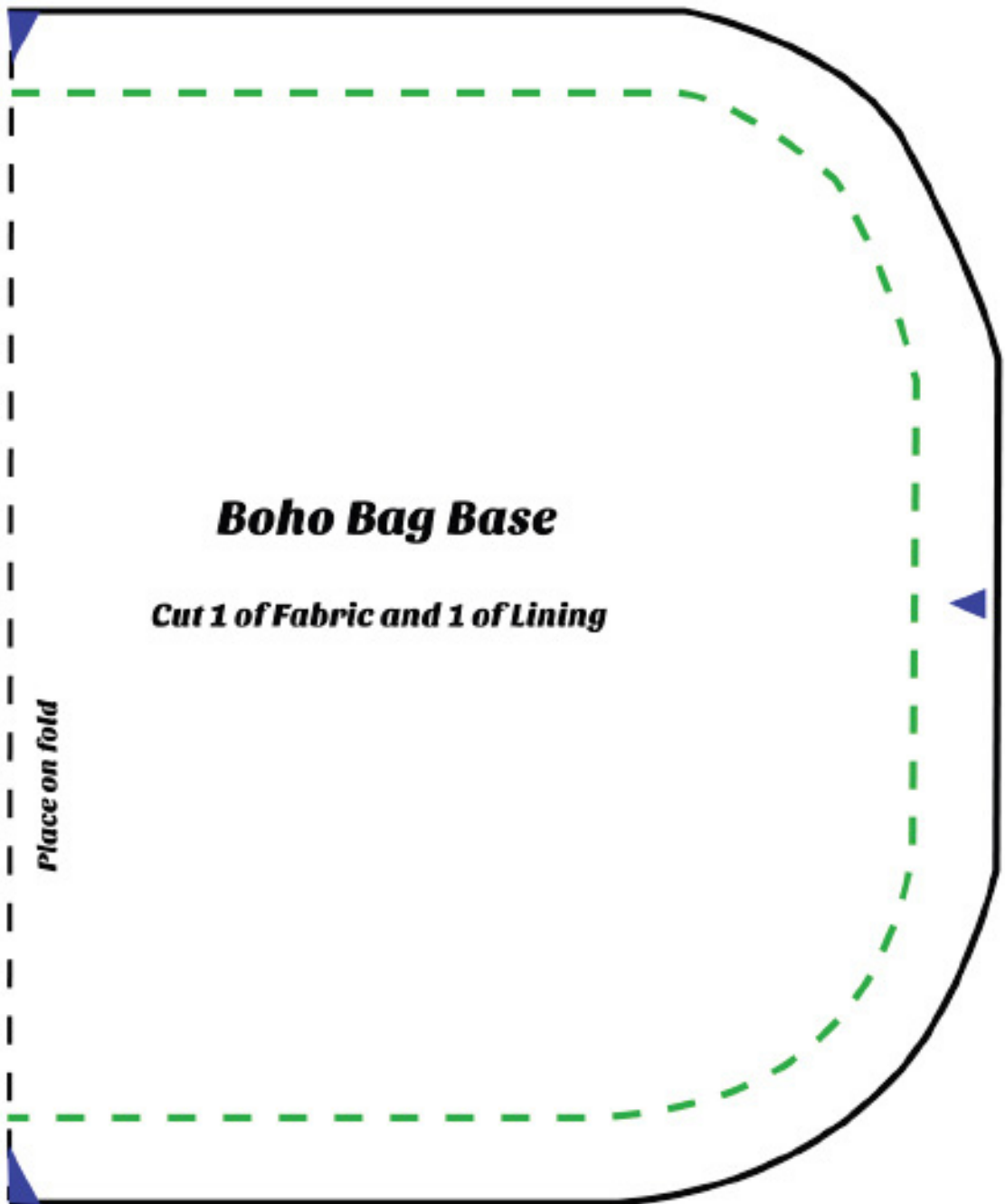
Inside Pocket

8

9



Mark for Centre Seam



Boho Bag Base
Cut 1 of Fabric and 1 of Lining

Place on fold

Mark for Side of Bag

Mark for Centre Seam

10