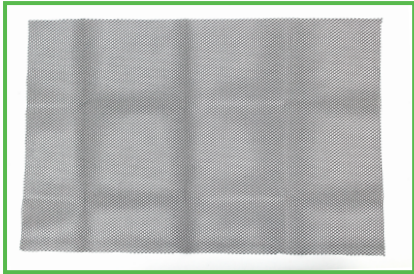
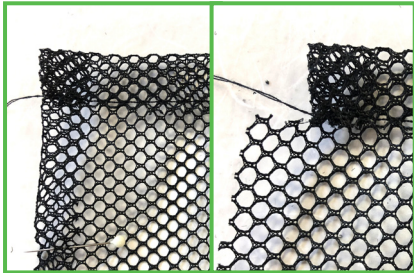


DIY MESH BAG



STEP 1

Cut a 60cm x 40cm rectangle of mesh. Increase or decrease the size based on desired size of bag.



STEP 2

Fold both side edges in 1cm and pin. Fold the top edge 2cm and stitch 1.5cm from the fold to make a casing for the cord. Clip side edges just below casing.



STEP 3

Fold rectangle in half wrong sides together and stitch 0.5cm along side and bottom.



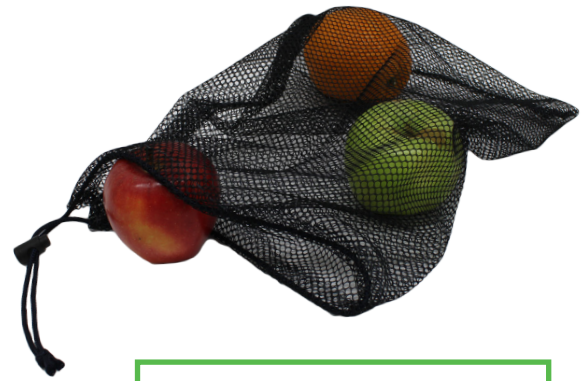
STEP 4

Turn right side in and hand press the seam. Stitch 0.5cm along side and bottom to make a french seam.



STEP 5

Turn right side out. Cut 55cm - 60cm of cord. Attach a safety pin to the end of your cord and pull through casing.



Supplies

- Mesh Fabric
- Nylon Cord
- Cord Stop
- Needle and Thread
- Safety Pin

Note: For best results, use a sewing machine.



STEP 6

Add cord stop and secure the ends with a knot.

Tip: Heat the ends of the cord with a lighter to stop fraying. **DO NOT** try this with cotton cord.