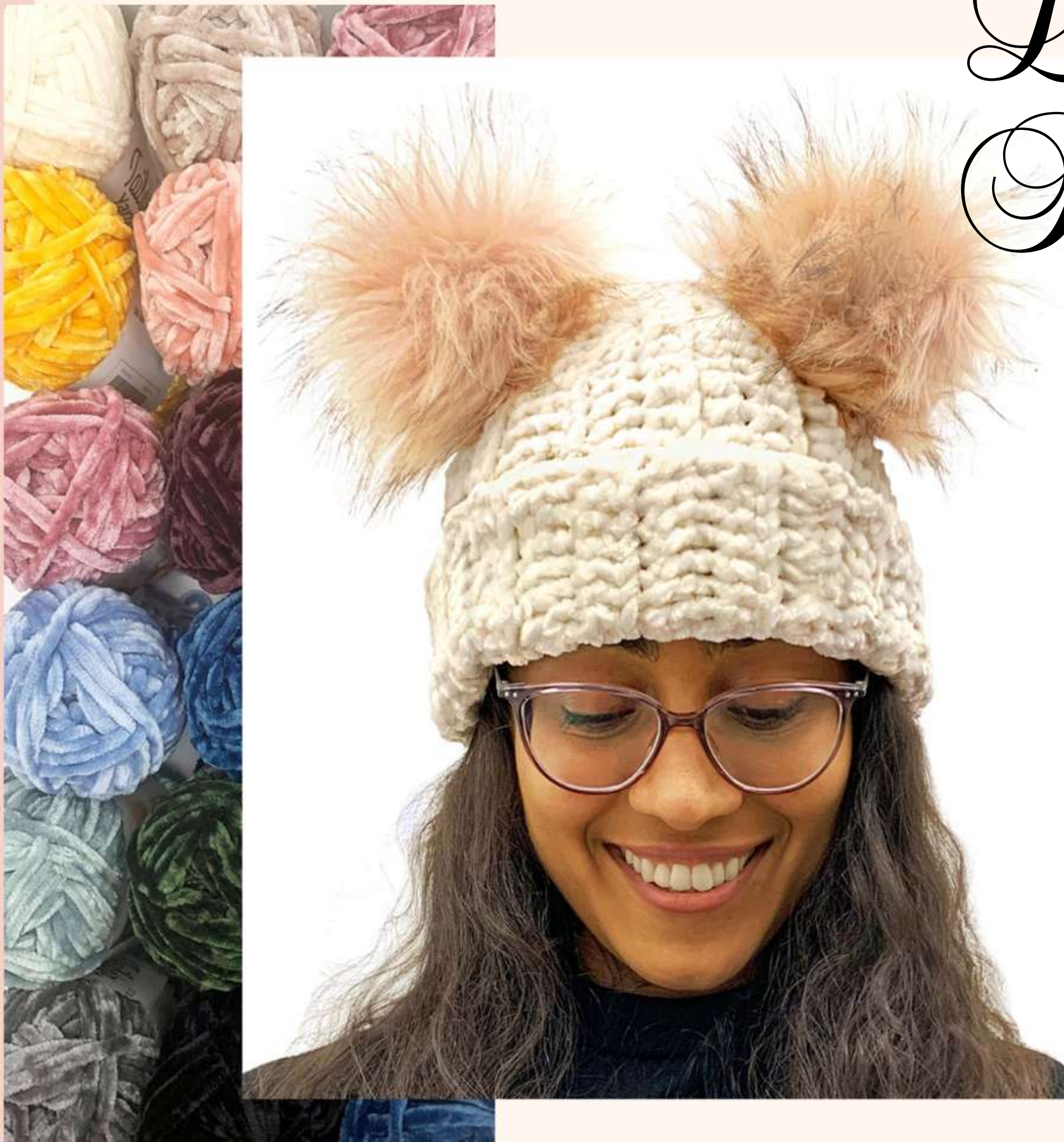


Luscious Ribbed Beanie



MATERIALS:

- 100 - 200g of #5 Bulky weight yarn (approx. 65m/71yds - 130m/142yds)
- 8mm (L-11) crochet hook
- Yarn needle
- One - two Pompom(s) (optional)

GAUGE: 9 dc x 6 rows = 10cm (4")

ABBREVIATIONS:

- ch = chain
- dc = double crochet
- dcblo = double crochet in back loop only
- st = stitch
- sl st = slip stitch
- Rep = repeat

CROCHET PATTERN:

Ch 30

Row 1: 1dc in 4th ch from the hook, dc in each ch until end of row

* This will be the length of your beanie unfolded, starting from the top center of the head. You may lengthen or shorten the size by increasing or decreasing the number of chains at the beginning. Ch 30, measures approx. 26cm (10 ¼ ") in length, unfolded.

Row 2: Ch 3 (counts as 1 dc), dcblo in each st until end of row. Turn.

Rep Row 2, until the rows measure the circumference of your head. You will be left with a rectangle. Lay project flat, right side facing up, with rows lying horizontally. Fold in half by matching together the top edge with the bottom edge. Sl st both edges together. Fasten off, and weave in loose ends.

Finishing: To close the top of the beanie, take a yarn needle and left over yarn, and weave yarn into each row of one open end. Pull yarn tightly to close and fasten off. Sew up any remaining opening at the top of the beanie. Weave in ends. Leave beanie as is or add one or two pompoms as an accent!