



# Makeup Bag

## What you need:

- Measuring Tape
- Quilting Pins
- Craft Scissors
- Hand Sewing Needle & Thread
- 20" (50 cm) Bridal Satin (Main & Lining)
- 10" (25 cm) Heart Flocked Tulle
- 20" (50 cm) Pellon® 100 Vinyl-Fuse™ Gloss
- 23" (9 cm) Closed End Zipper



Step 1: Fold main & lining fabric, tulle and vinyl in half. Place pattern pieces on fold. Cut each material separately.

**Note: Trace pattern onto wrong side of vinyl before cutting it out.**

Step 2: Pin then sew tulle to the right side of the main fabric before ironing vinyl on to the right side of the fabric.

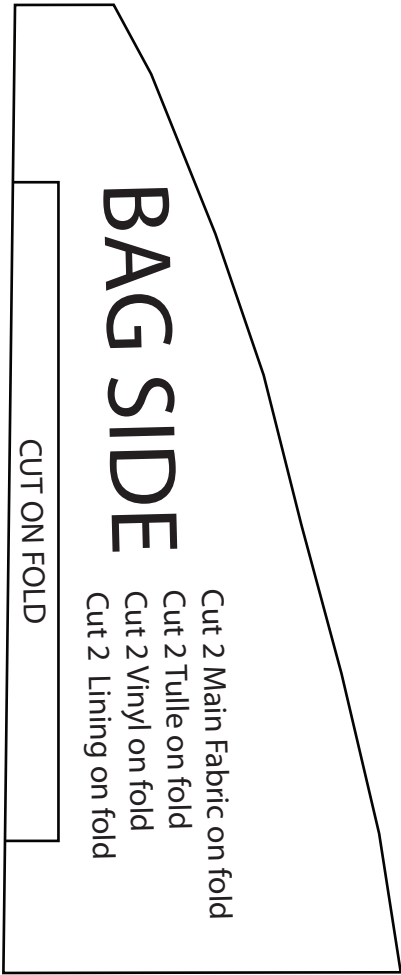
Step 3: Sew bag sides to centre of each main bag fabric edge. Do the same for the lining.



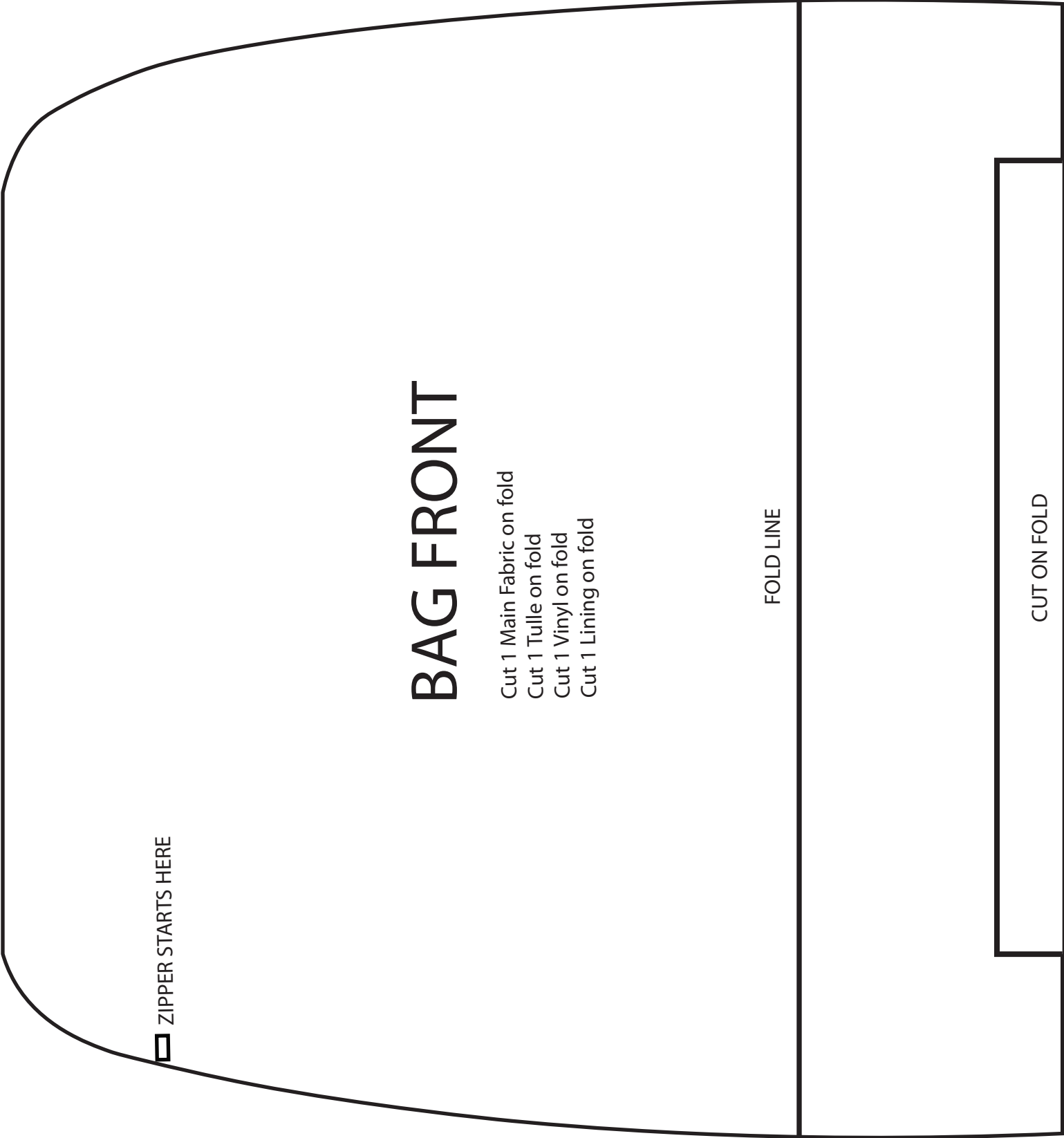
Step 4: Continue to pin & sew bag sides to the main bag fabric. Do the same for the lining.

Step 5: Pin the right sides of the main fabric and lining to the zipper & hand sew together to finish.

# Makeup Bag Pattern



# Makeup Bag Pattern



 ZIPPER STARTS HERE

## BAG FRONT

- Cut 1 Main Fabric on fold
- Cut 1 Tulle on fold
- Cut 1 Vinyl on fold
- Cut 1 Lining on fold

FOLD LINE

CUT ON FOLD