

Spider Accessories

What you need:

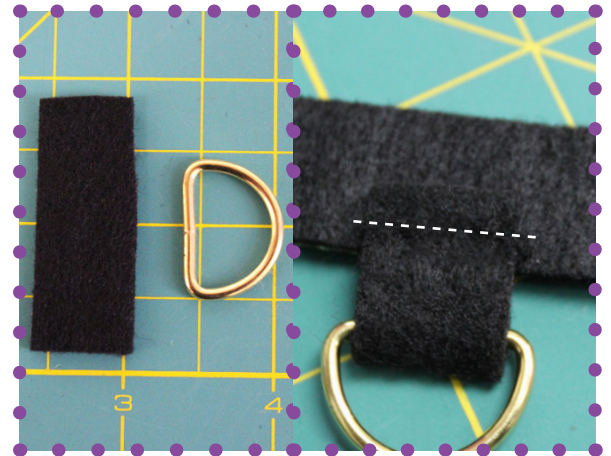
- Sewing Machine & Thread
- Medium Weight Felt (Black)
- Rhinestone Trim (Iron-on)
- Glue Gun & Sticks
- Scissors & Pins
- Fashion Chain
- Cinch Buckle
- Glitter Elastic
- D-Ring
- Pliers



Part One - Necklace:



Step 1: Cut out Spider and Necklace pattern from Black Medium Weight Felt. Attach Cinch Buckle to the ends of Necklace piece. Sew at 1/4" (0.6cm) from the edge.



Step 2: Cut out D-Ring Loop pattern from Black Medium Weight Felt. Attach Loop with D-Ring to the center back of the Necklace. Sew at 1/2" (1cm).



Step 3: Cut 13" (33cm) of Rhinestone Trim and iron onto front of Necklace.
*Note: If you have chosen a trim that isn't iron-on, handstitch to felt.



Step 4: Using pliers, attach 4" (10cm) of Chain to the D-Ring. Glue Spider to Chain; this creates the illusion of a web.

Part Two - Bracelet:



Step 1: Cut out Bracelet pattern from Black Medium Weight Felt. Attach felt piece to 2.5" (6.4cm) of Glitter Elastic and sew at 1/2" (1cm).



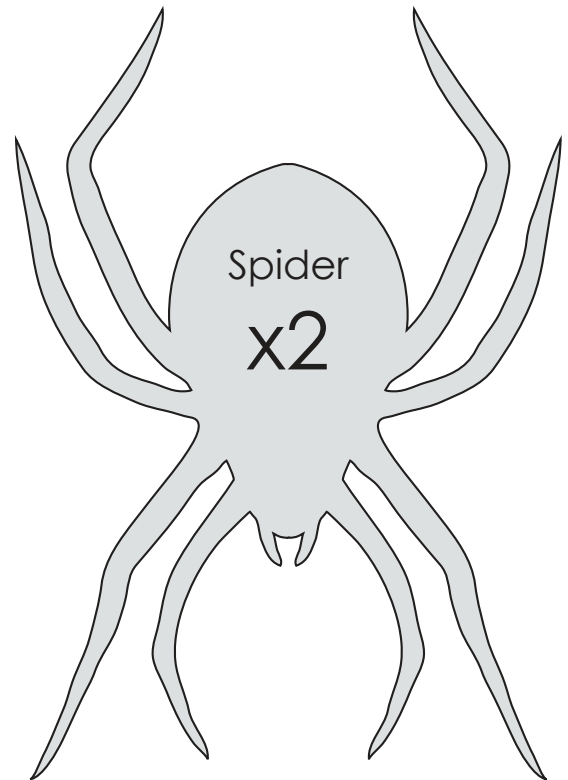
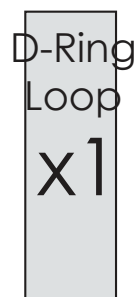
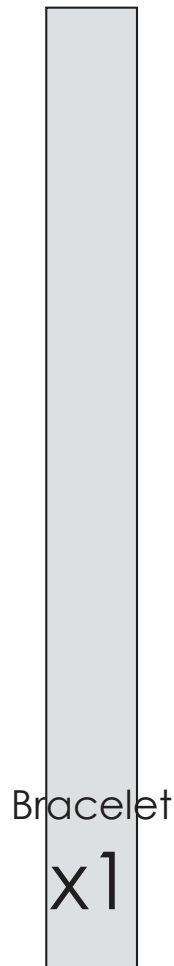
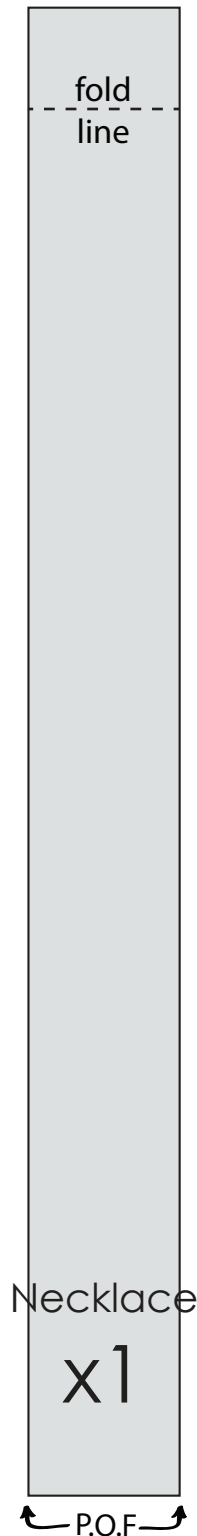
Step 2: Handstitch 4" (10cm) of Chain to the felt piece with Black Thread.



Step 3: Now Hot Glue Felt Spider to the center of the Chain decoration.



Spider Accessories



Note: P.O.F - Place On Fold
Fold material in half, and place P.O.F end on the fold before cutting.

For a larger Necklace, cut a longer piece of felt. For a larger Bracelet, use a longer piece of Glitter Elastic.